

---

# ILLUSTRATIONS AND SOURCES.

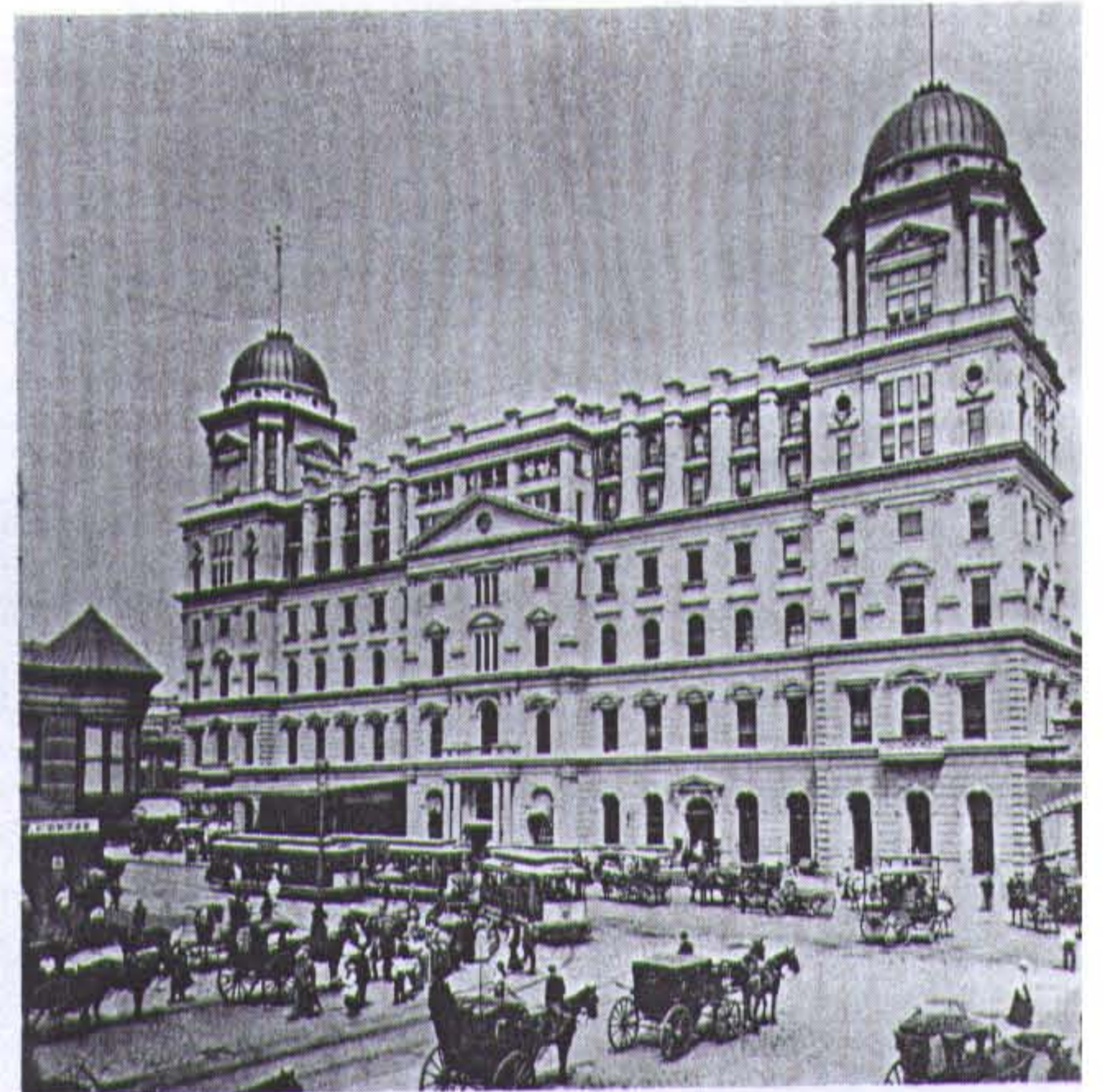
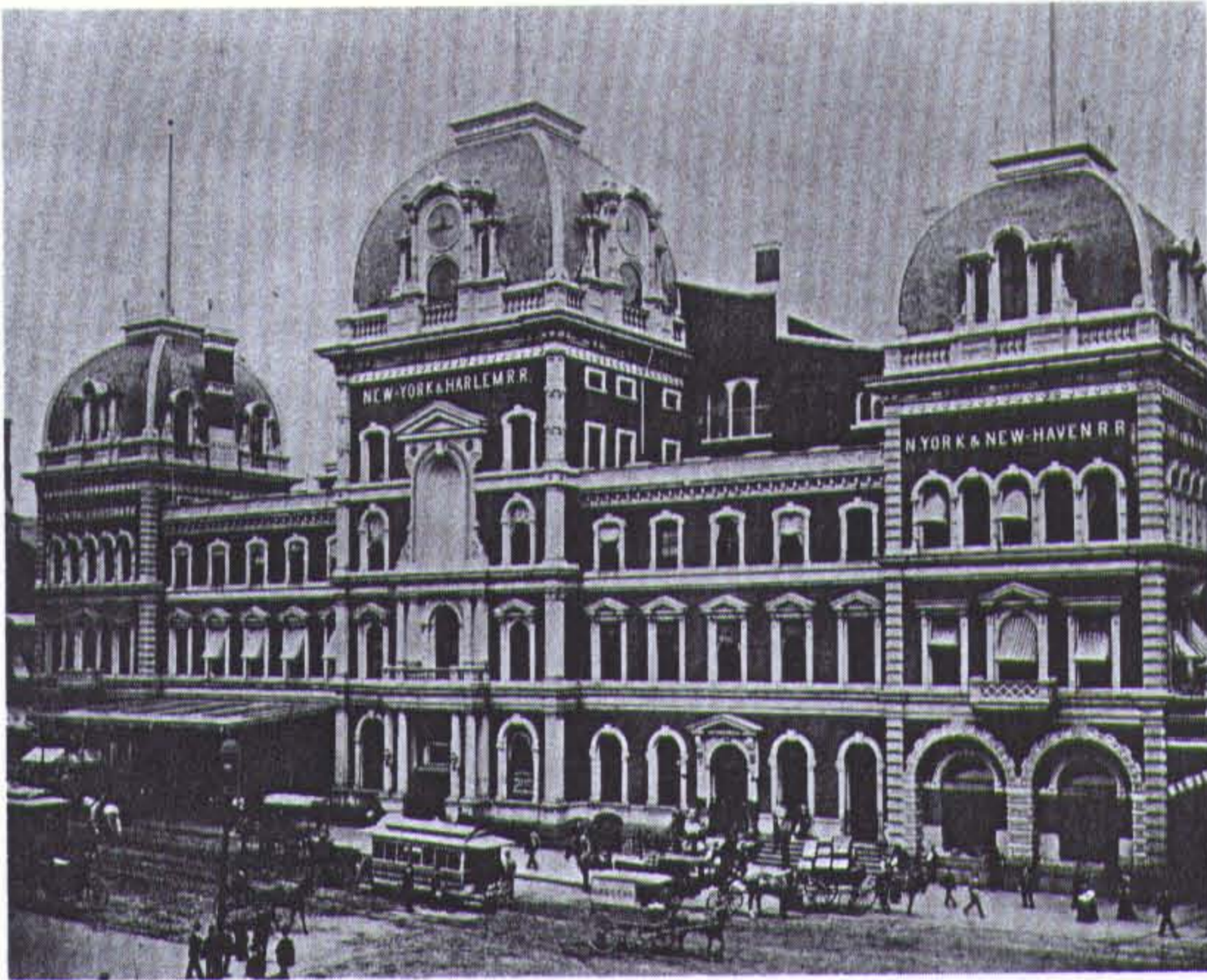
---

A description of the illustration is followed by the date it was made, when obtainable; and the maker (the photographer unless otherwise indicated), when known. The last listing is the source.

Midtown compass directions are conventionalized, with avenues considered to be running north-south.

## THE URBAN SCENE AND PUBLIC PLACES. 22

- 23 *The Plaza, 59th Street and Fifth Avenue, showing old Plaza Hotel (right). Looking south.* New York Public Library.
- 24(1) *Central Park South, looking east to Hotel Netherland on Fifth Avenue. Ca. 1925.* Private collection.
- 24(2) *The Plaza, showing Pulitzer fountain, "Marble Row" (left) and Cornelius Vanderbilt II house (right). Looking southeast. Ca. 1925.* Wurts Brothers.
- 25(3) *The Plaza, showing Pulitzer fountain and Cornelius Vanderbilt II house (center). Looking south. Before 1927.* Private collection.
- 25(4) *The Plaza, showing Savoy-Plaza Hotel (left) and Bergdorf Goodman store (right). Looking southeast. 1931.* Wurts Brothers.
- 26(1) *Washington Inaugural Centennial wooden arch, Fifth Avenue and Washington Square North. Looking northeast. 1889.* Museum of the City of New York.
- 26(2) *Columbus Quatercentenary Arch, Fifth Avenue and 58th Street. Looking north from 57th Street. 1892.* New-York Historical Society.
- 27(3) *Dewey Arch, Fifth Avenue between 23rd and 24th Streets, showing Fifth Avenue Hotel (left), and intersection of streets with Broadway (diagonal trolley tracks). Looking north. 1899.* A. Wittemann. New-York Historical Society.
- 28(1) *Grand Central Terminal, 1871 building, 42nd Street at end of Fourth Avenue. Looking northwest. H. N. Tiemann. Private collection.*
- 28(2) *Grand Central Terminal, 1899 building, 42nd Street at end of Fourth Avenue. Looking northwest. Courtesy Columbia University School of Architecture.*
- 29(1) *Park Avenue, showing New York Central building. Looking south.* Wurts Brothers.
- 30(2) *Park Avenue vehicle ramp at Grand Central Terminal, above Vanderbilt Avenue. Looking south. Courtesy Columbia University School of Architecture.*
- 31(3) *Grand Central Terminal, showing Park Avenue vehicle ramp. Looking northeast.* Wurts Brothers.
- 31(4) *Grand Central Terminal entablature sculpture, and roof of New York Central building. Looking north. Courtesy Avery Architectural Library.*
- 33(1) *Pennsylvania Station, Seventh Avenue between 31st and 33rd Streets. Looking northwest. Courtesy Pennsylvania Railroad Company.*
- 34(2) *Pennsylvania Station Train Concourse roof, aerial view looking northwest. Construction progress photo. 1910. Courtesy Avery Architectural Library.*
- 35(3) *Pennsylvania Station. Interior of Train Concourse roof. 1963.* Nathan Silver.
- 35(4) *Pennsylvania Station. Interior of Train Concourse, showing track and platform levels. Looking northeast. Construction progress photo. 1910. Courtesy Avery Architectural Library.*
- 36(5) *Pennsylvania Station. Interior of General Waiting Room. Looking north. Courtesy Pennsylvania Railroad Company.*
- 36(6) *Pennsylvania Station. South Carriage Driveway, looking west. Courtesy Avery Architectural Library.*



1 2

*EARLY GRAND CENTRAL TERMINALS.* The first Grand Central (1) was built in 1871 for the New York and Harlem, New York and New Haven, and New York Central Railroads. The rugged mansard-roofed wings flanking a central block formed an outline imitated by the Grand Union Hotel, from which this photo was taken. The depot was enlarged in 1899, and redesigned by C. P. R. Gilbert according to the stylistic modes of its own decade (2). The acquisition of underground track rights in 1903 made the present terminal necessary.